

# FIELD REPLACEABLE UNIT DOCUMENTATION

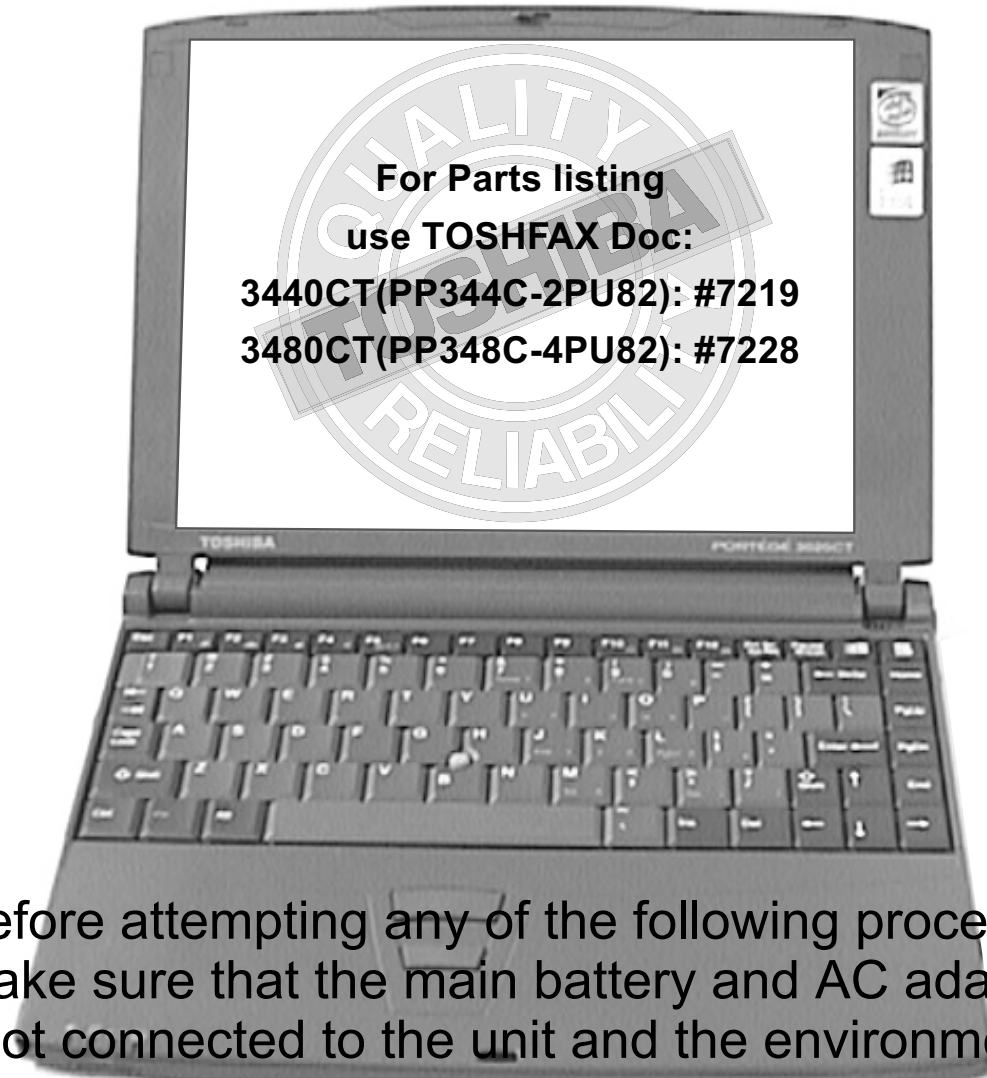
**Portege™**

**3400 Series**

---

## GENERAL INFORMATION

---



Before attempting any of the following procedures, make sure that the main battery and AC adaptor is not connected to the unit and the environment in which you are working on is protected from Electro-Static Discharge(ESD).

---

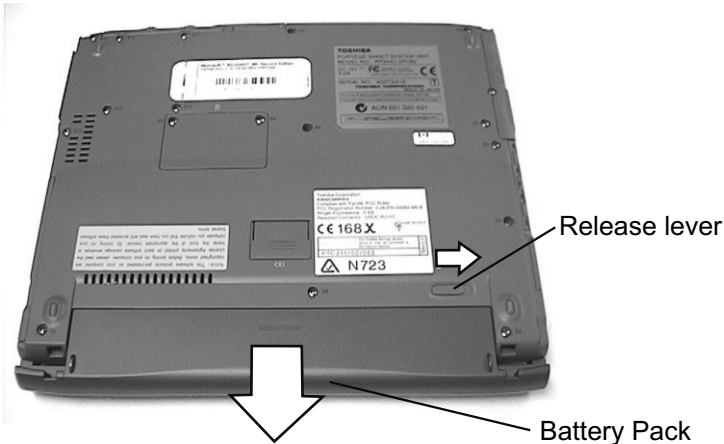
# **TOSHIBA**

**Tough Enough for Today's World.**

# FIELD REPLACEABLE UNIT DOCUMENTATION

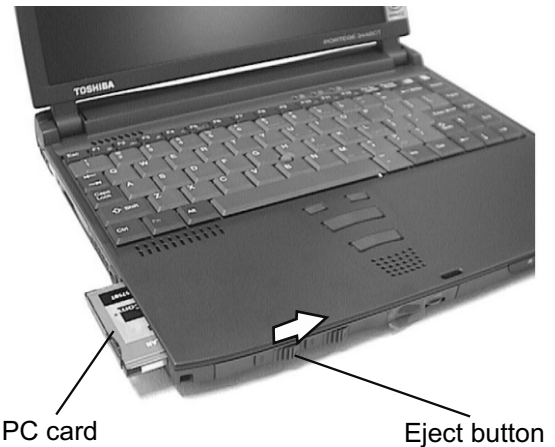
## Portege™ 3400 Series

### BATTERY PACK REMOVAL



1. Turn the computer upside down as shown.
2. Slide the **battery release lever** in the direction of the arrow and slide the battery out of the computer.

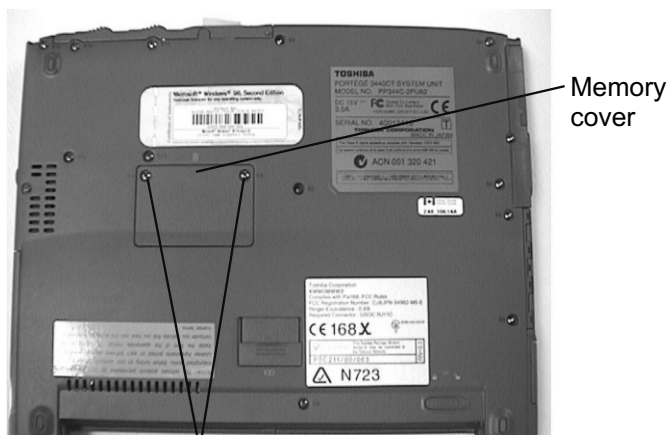
### OPTIONAL PCMCIA CARD REMOVAL



1. Slide the **eject button** to the right.
2. Grasp the **PC card** and remove it.

**NOTE:** Before removing any PCMCIA device, make sure it is "Stopped" in the PC Card Manager.

### EXPANSION MEMORY REMOVAL



M2x4 flat head black screws

1. Turn the computer upside down.
2. Remove **two M2x4 flat head black screws** securing the memory cover.
3. Lift off the **memory cover**.
4. Push the memory clips outward and pull the **memory module** out of the connector on a 45 degree angle.

### PALMREST REMOVAL



1. Turn the computer upside down.
2. Remove the following screws:
  - **Two M2x10 black screws**
  - **Four M2x6 black screws**

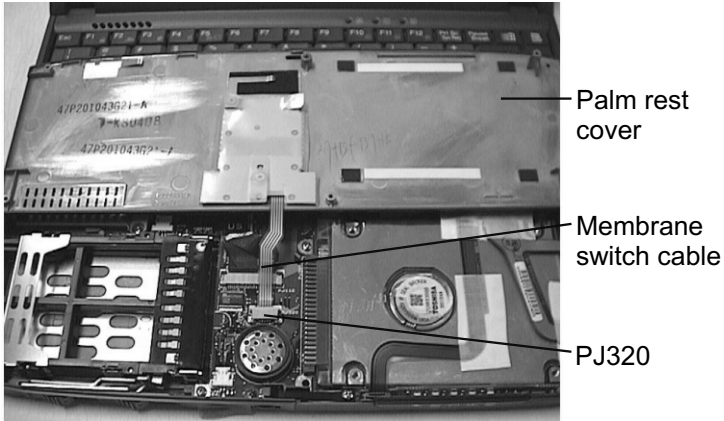
# TOSHIBA

**Tough Enough for Today's World.**

# FIELD REPLACEABLE UNIT DOCUMENTATION

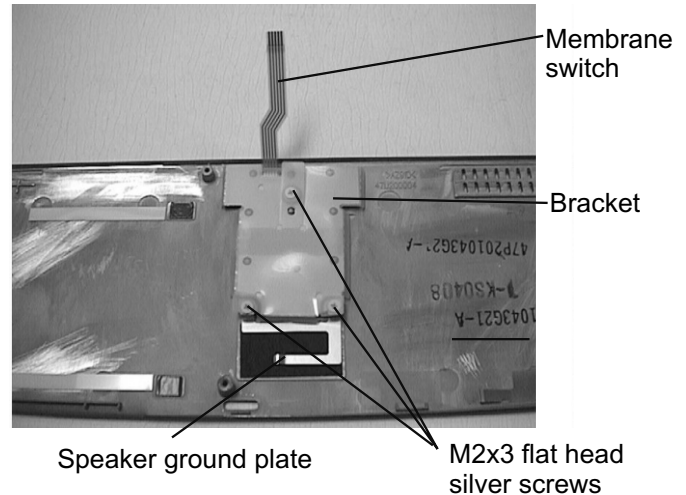
## Portege™ 3400 Series

### PALMREST REMOVAL



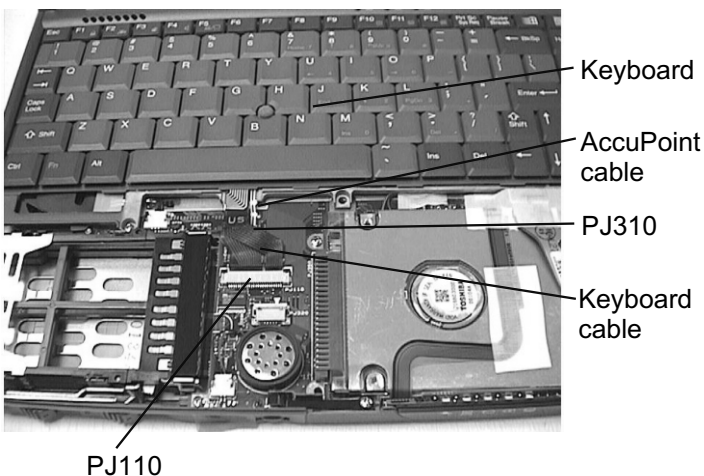
3. Turn the computer right side up and lift up the palm rest cover.
4. Disconnect the **membrane switch cable** from **PJ320** and remove the **palm rest cover**.

### MEMBRANE SWITCH REMOVAL



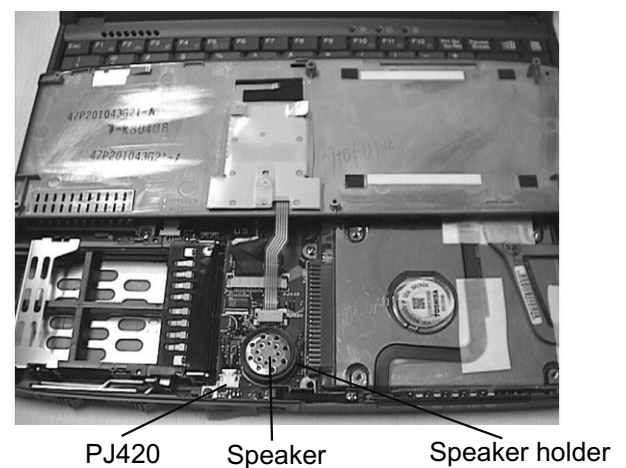
1. Remove **three M2x3 flat head silver screws** securing the bracket
2. Lift off the **bracket** and **speaker ground plate**.
3. Lift off the **membrane switch**.

### KEYBOARD REMOVAL



1. Disconnect the **keyboard cable** from **PJ110**.
2. Disconnect the **accupoint cable** from **PJ310**.
3. Lift out the **keyboard**.

### SPEAKER REMOVAL



1. Disconnect the speaker cable from **PJ420** on the system board.
2. Lift out the speaker assembly and remove the **speaker** from the **speaker holder**.

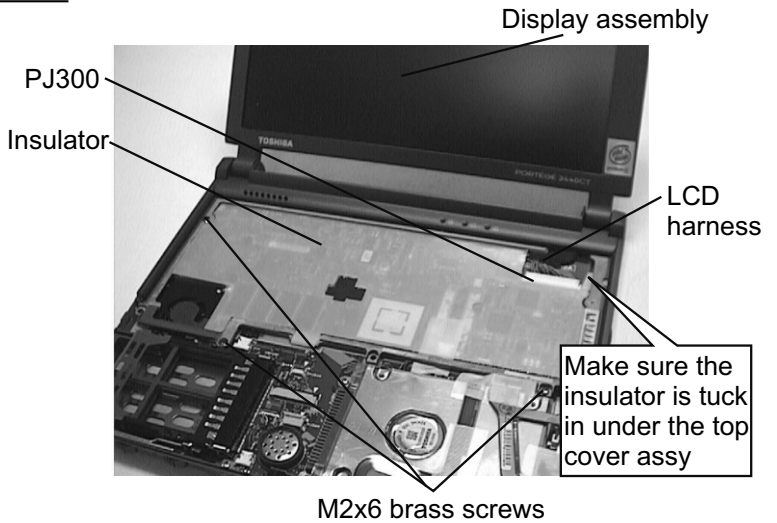
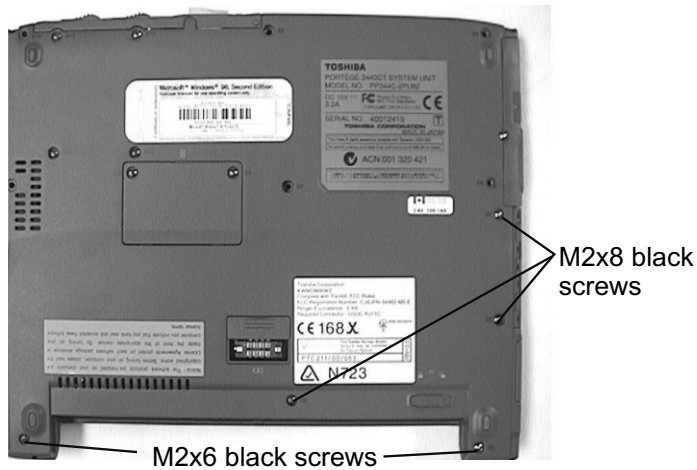
# TOSHIBA

Tough Enough for Today's World.

# FIELD REPLACEABLE UNIT DOCUMENTATION

## Portege™ 3400 Series

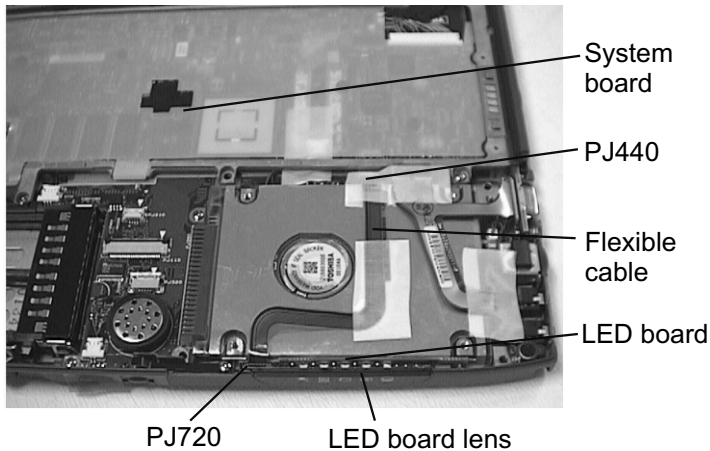
### DISPLAY ASSEMBLY and UPPER COVER REMOVAL



1. Turn the computer upside down as shown.
2. Remove the following screws.
  - Three M2x8 black screws
  - Two M2x6 black screws

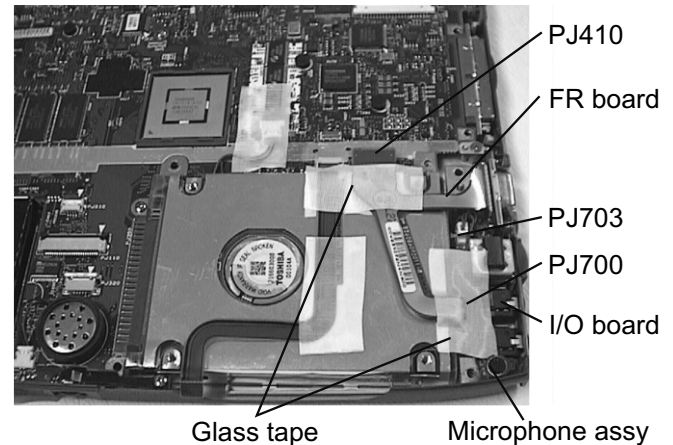
3. Turn the computer right side up and disconnect the **LCD harness** from **PJ300**.
4. Remove **three M2x6 brass screws** securing the display assembly and lift out the **display assembly**.

### LED BOARD REMOVAL



1. Remove the **LED board lens**.
2. Lift out the **LED board** and disconnect the **flexible cable** from **PJ720** on the LED board and **PJ440** on the system board.

### I/O BOARD REMOVAL



1. Peel off the **glass tape** securing the microphone harness on the I/O board and FR board.
2. Disconnect the microphone cable from **PJ703** and lift out the **microphone assembly**.
3. Remove **glass tape** and **one M2x4 black screws** securing FR board. Disconnect the **FR board** from **PJ410** on the system board and from **PJ700** on the I/O board and lift out the FR board.
4. Remove the **I/O board** from the base assembly.

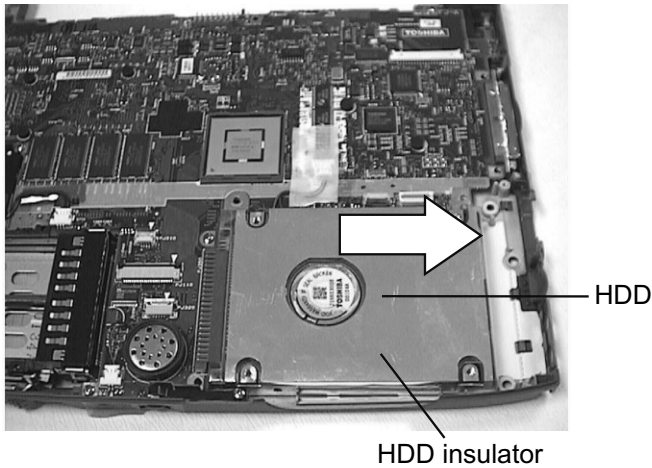
# TOSHIBA

Tough Enough for Today's World.

# FIELD REPLACEABLE UNIT DOCUMENTATION

## Portege™ 3400 Series

### HDD REMOVAL



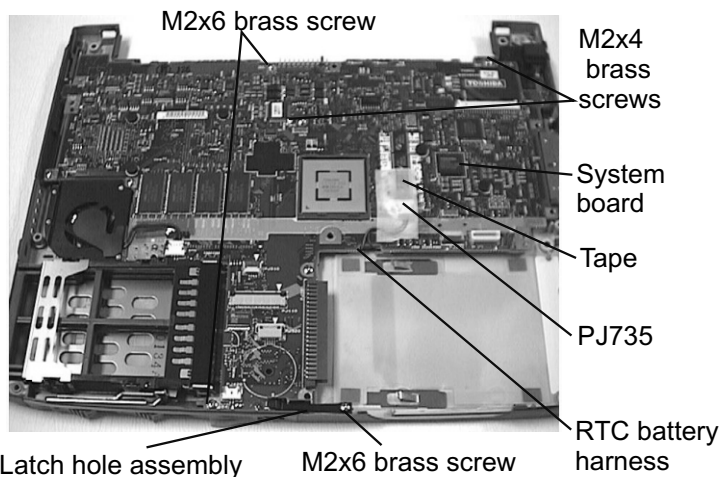
1. Slide the **HDD** to the right to disconnect from the system board.
3. Slide the drive out of the **HDD insulator**.

### SYSTEM BOARD REMOVAL



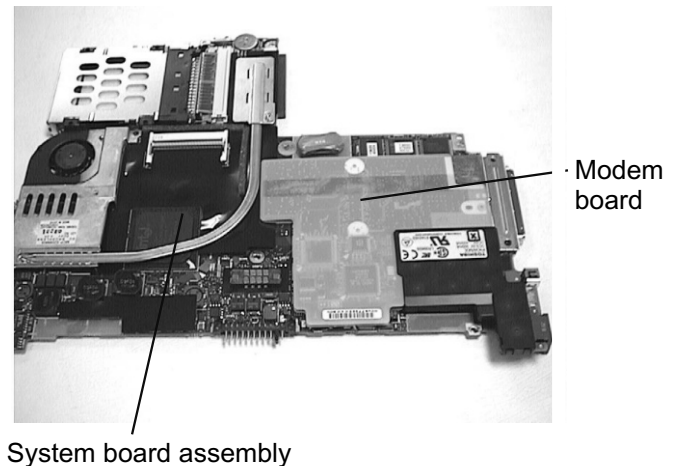
1. Turn the computer upside down.
2. Remove **four M2x10 black screws** securing the PC-Card assembly.
3. Turn the computer right side up.

### SYSTEM BOARD REMOVAL



4. Remove **two M2x6 brass screws** and **two M2x4 brass screws** securing the system board.
5. Remove **one M2x6 brass screw** securing the latch hole assembly and remove the **latch hole assembly**.
6. Peel off the **glass tape** securing the RTC battery harness and disconnect the **RTC battery harness** from **PJ735**.
7. Lift out the **system board**.

### MODEM REMOVAL



1. Turn the **system board assembly** upside down.
2. Disconnect the **modem board** from the system board.

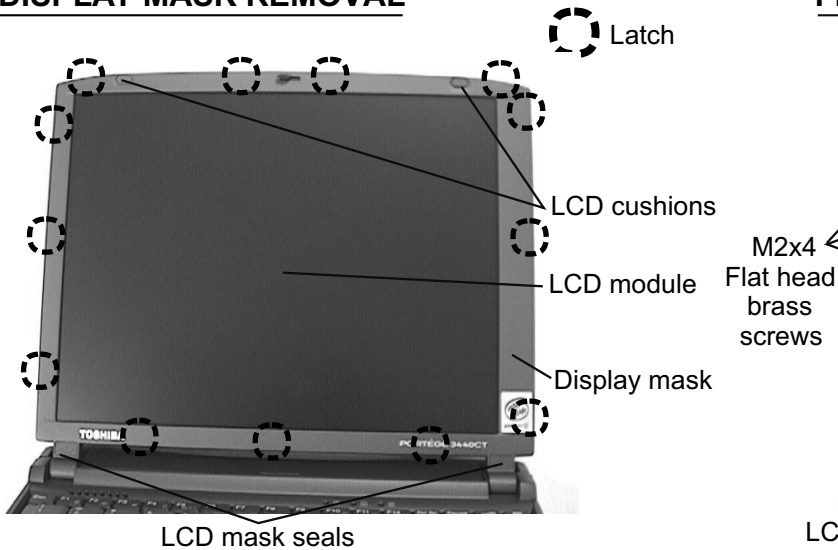
# TOSHIBA

Tough Enough for Today's World.

# FIELD REPLACEABLE UNIT DOCUMENTATION

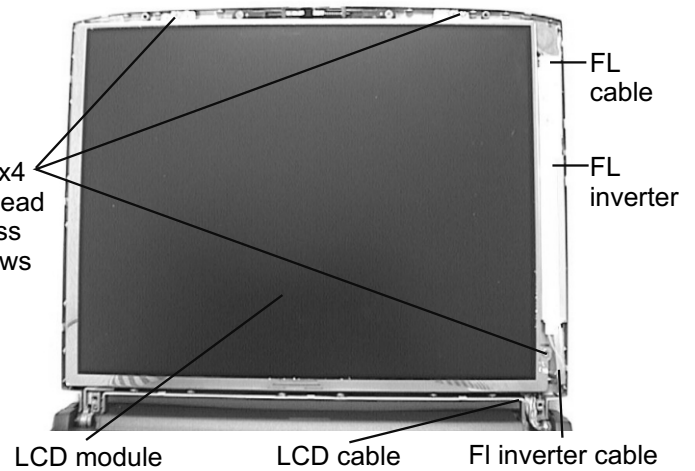
## Portege<sup>TM</sup> 3400 Series

### DISPLAY MASK REMOVAL



1. Remove **two LCD cushions** and **two LCD mask seals** using a pair of fine-tipped tweezers.
2. Remove **four M2.5x4 flat head brass screws** securing the display mask.
3. There are **13 latches** securing the display mask. Carefully insert your fingers between the **display mask** and the **LCD module** and pry open the display mask.

### FL INVERTER AND LCD REMOVAL



1. Lift up the **FL inverter board** and disconnect the **FL cable** from **CN2** and the **FL inverter cable** from **CN1**.
3. Remove **three M2x4 flat head brass screws** securing the LCD module.
4. Carefully rotate the LCD module from left to right of the LCD cover and disconnect the **LCD cable** from the **LCD module**.

# TOSHIBA

Tough Enough for Today's World.